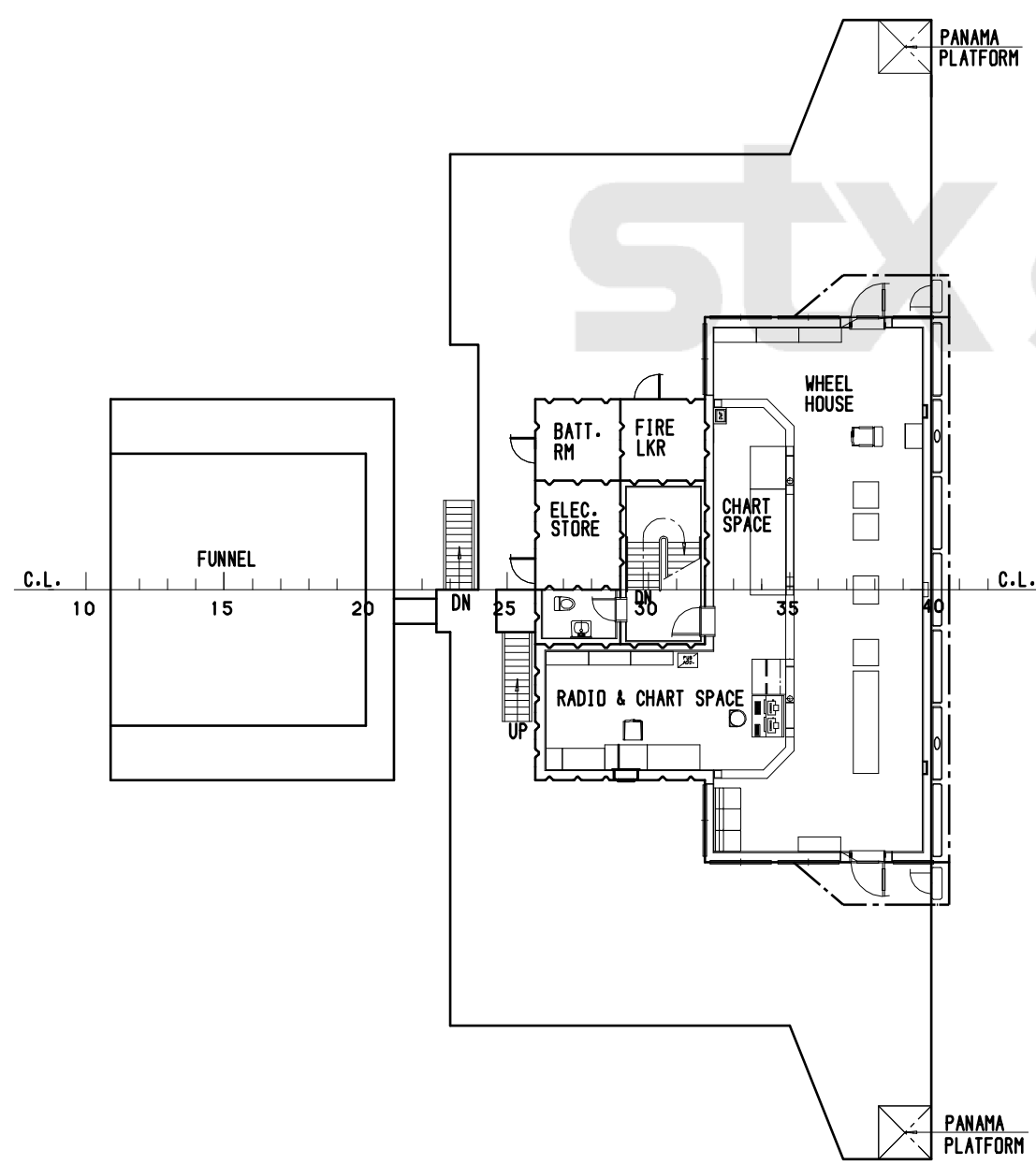


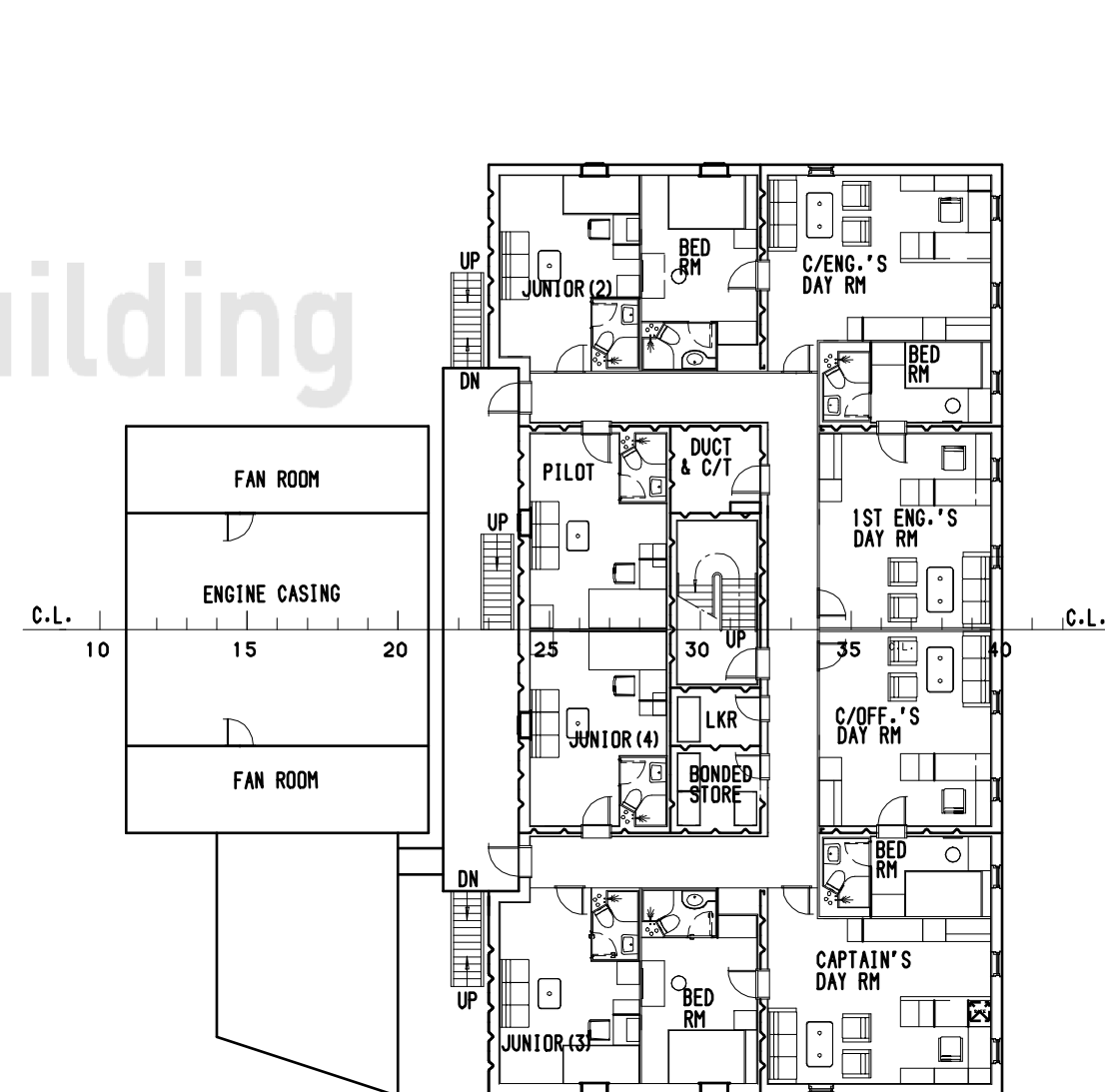
ST. JOHANNIS

PLAN HISTORY				
DATE	REV.	DESCRIPTION	DWN.	CHKD. MGR.
2007-01-25	0	DRAWN BY BASIC RESEARCH TEAM	M.W.LEE	J.S.PARK C.J.KIM

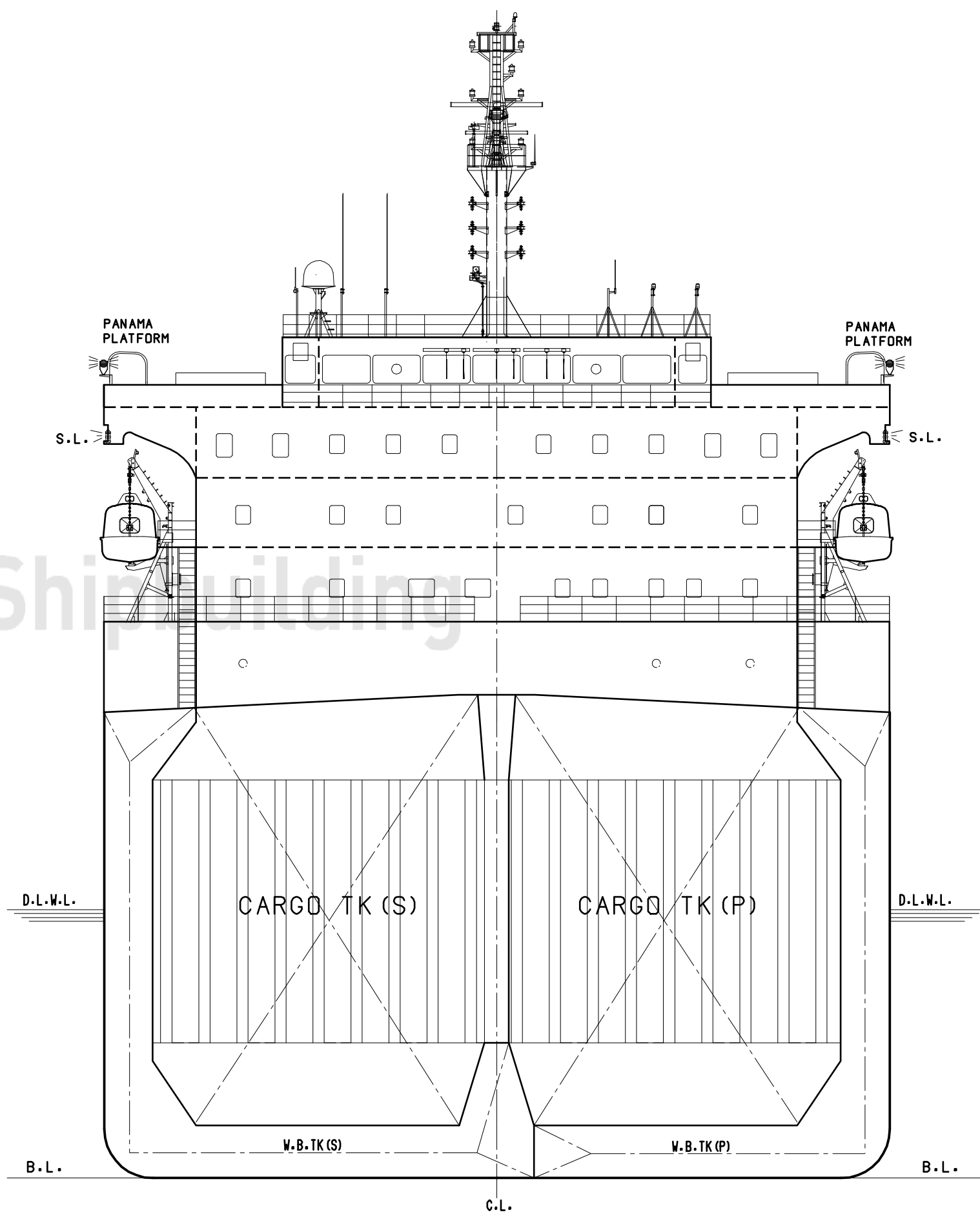
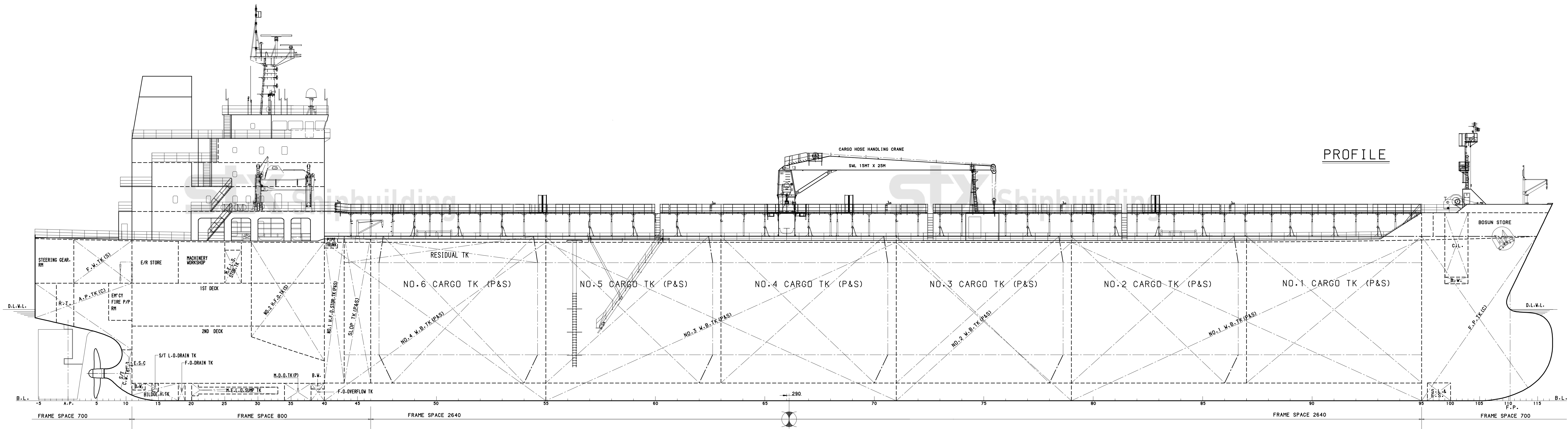
NAV. BRI. DECK



C-DECK

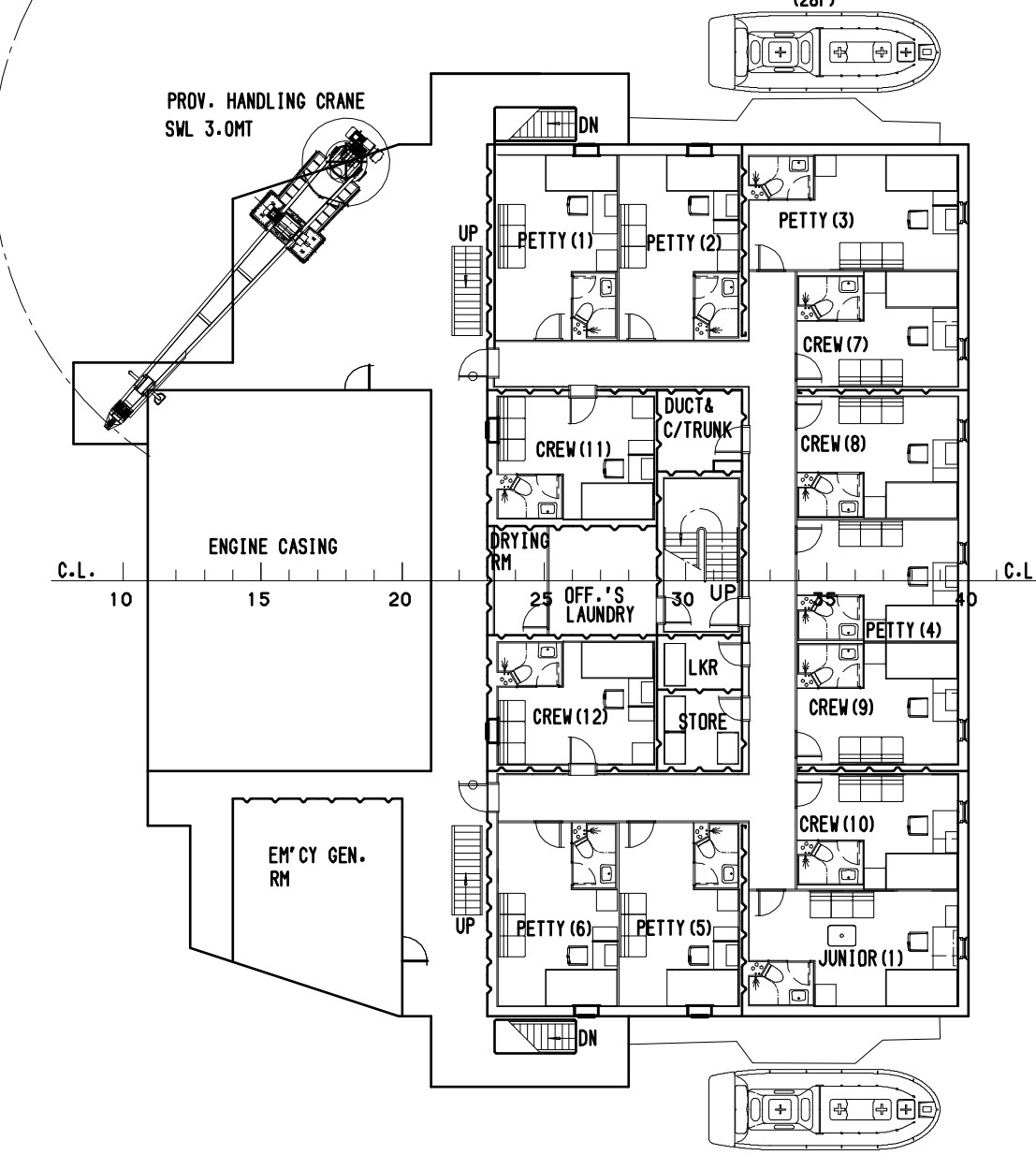


PROFILE

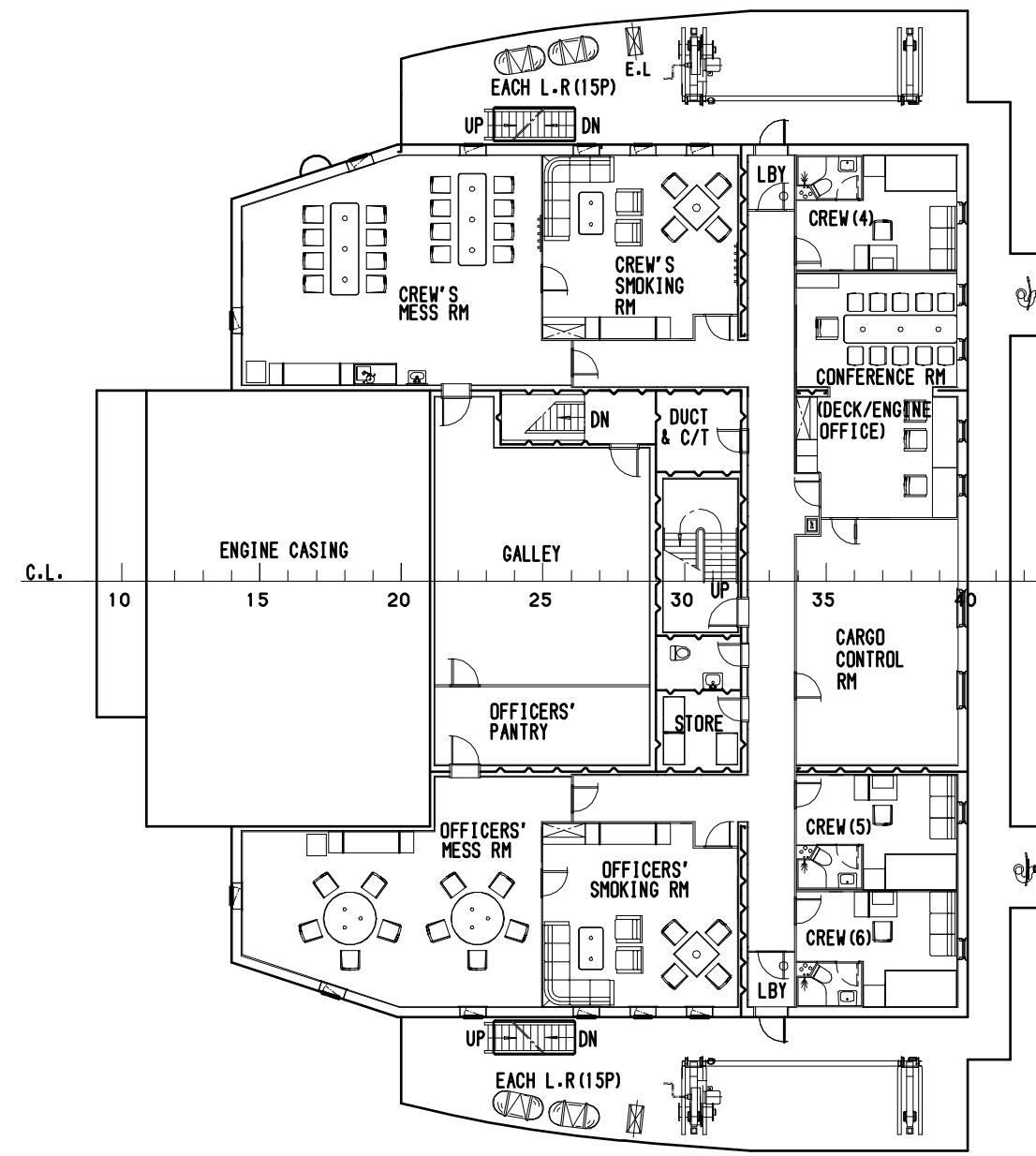


MIDSHIP SECTION

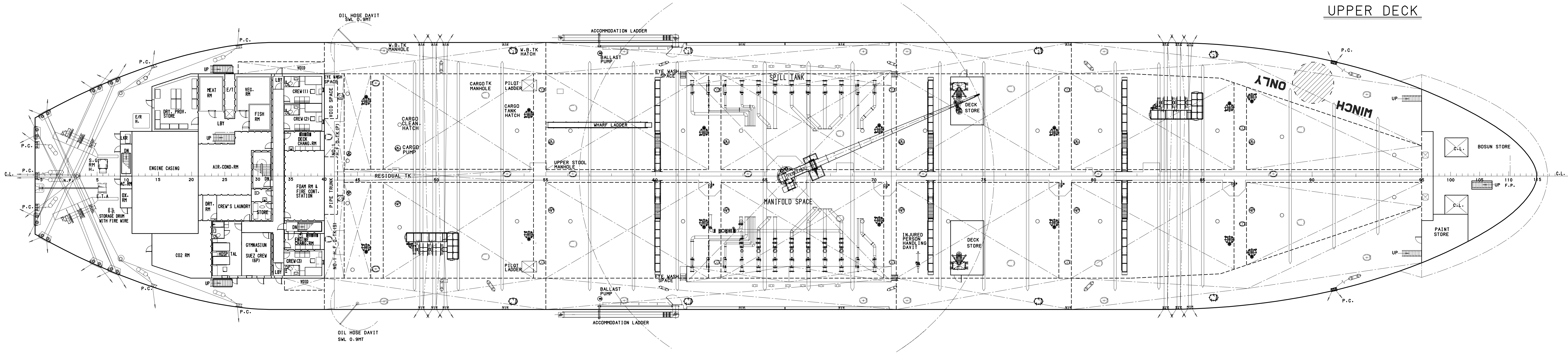
B-DECK



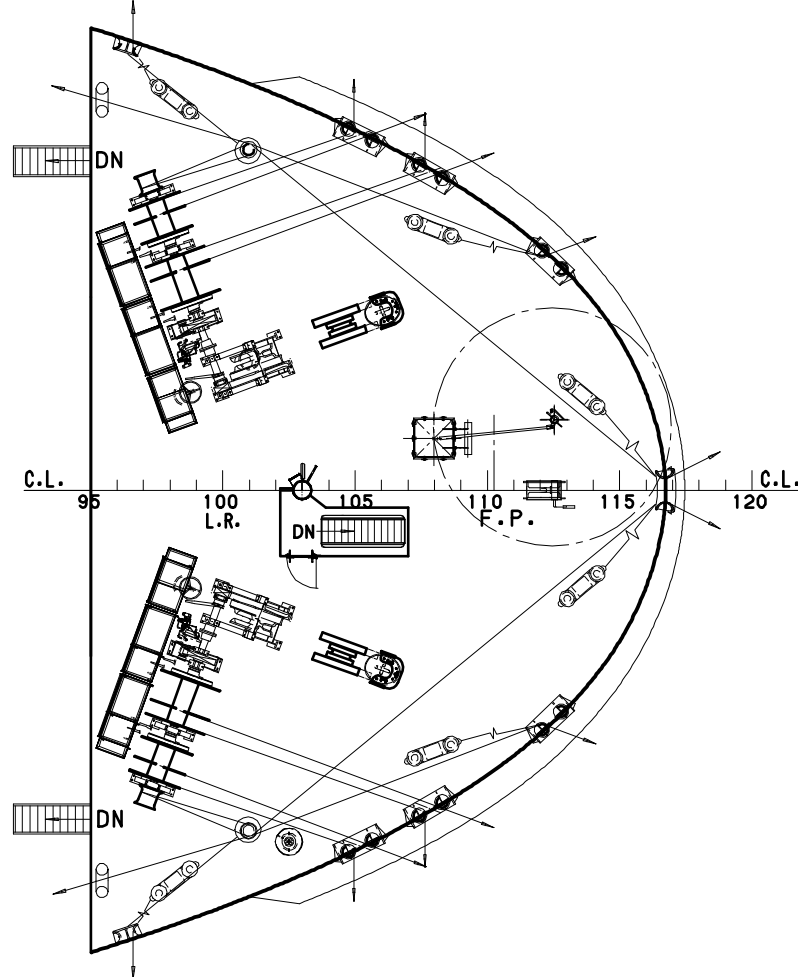
A-DECK



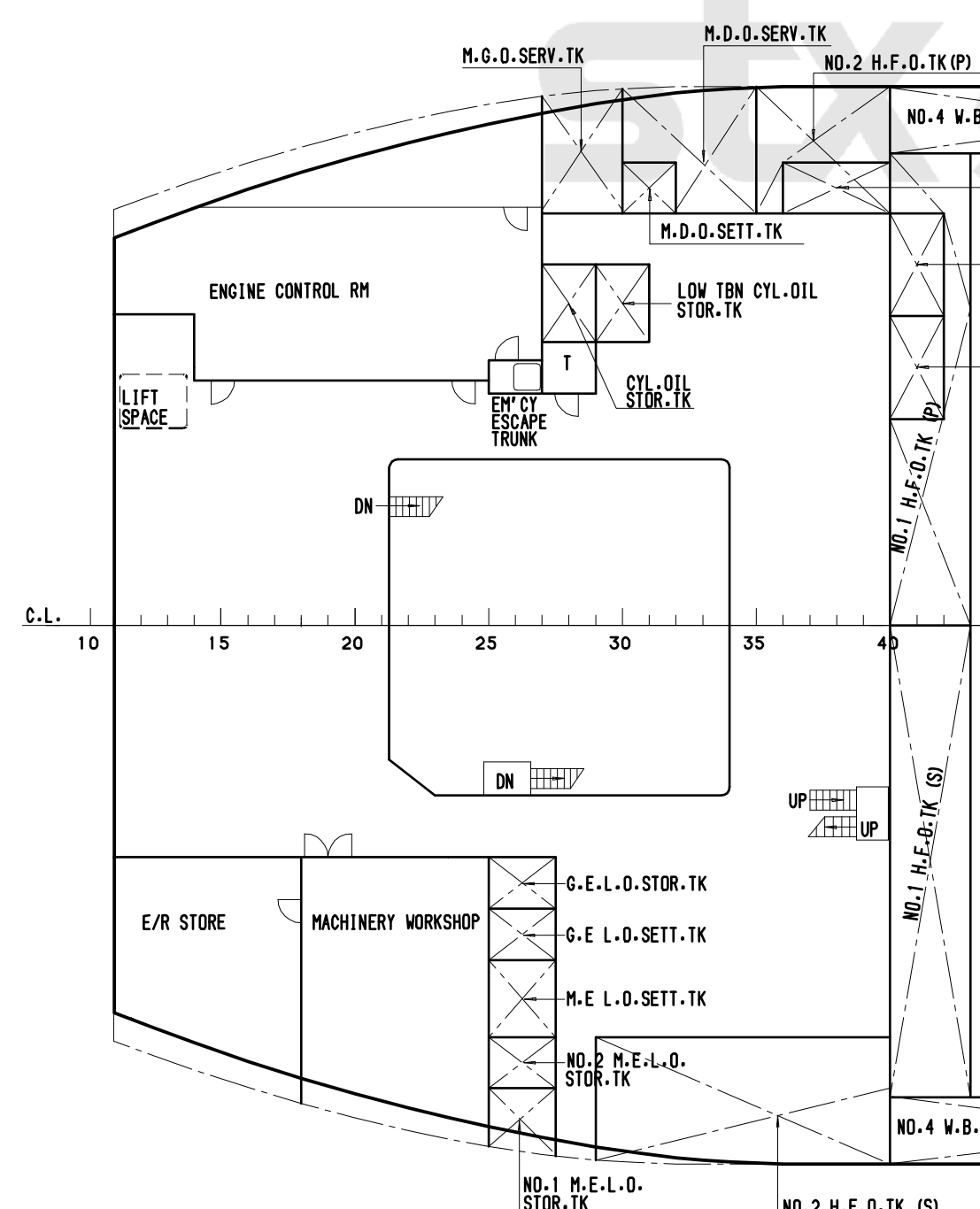
UPPER DECK



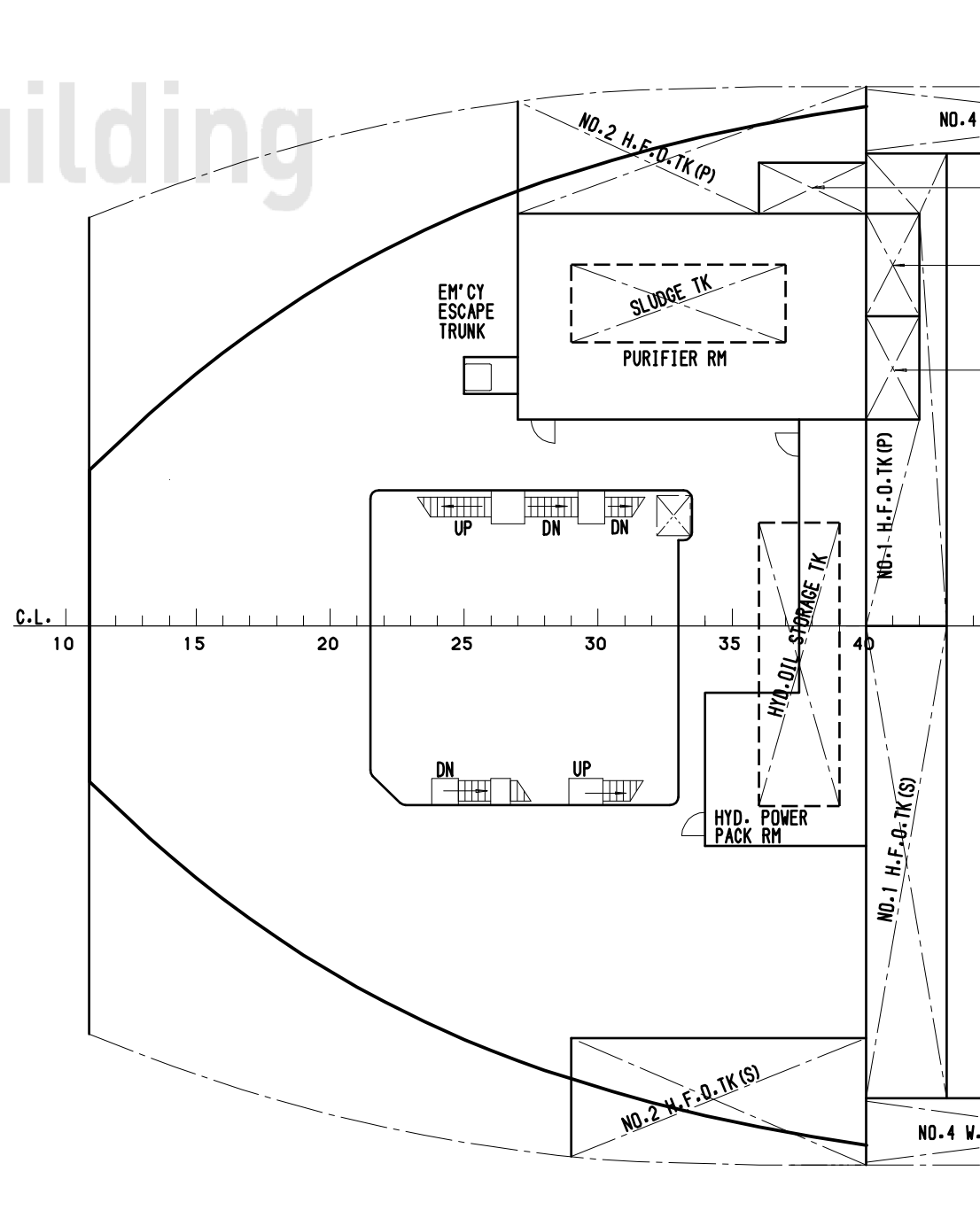
F'CLE DECK



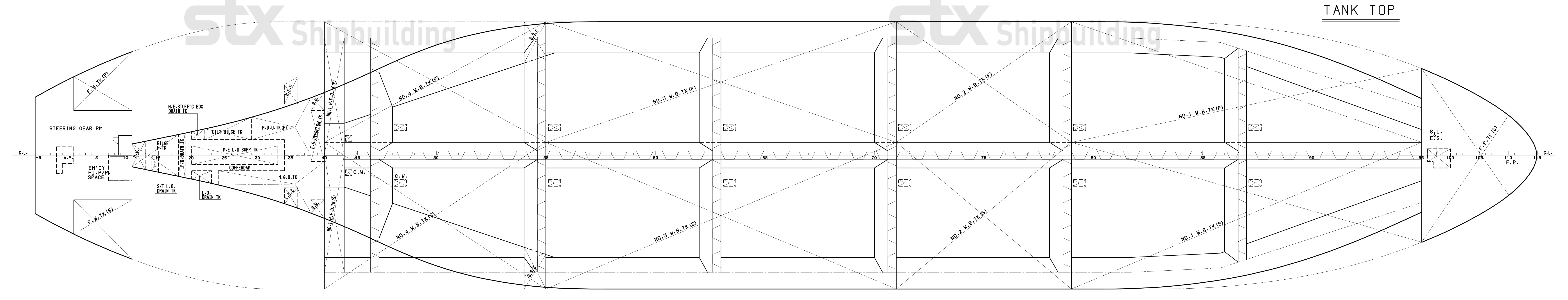
1ST DECK



2ND DECK



TANK TOP



PRINCIPAL PARTICULARS

LENGTH O.A.	183.00 M
LENGTH B.P.	173.90 M
BREADTH (MLD)	32.20 M
DEPTH (MLD)	19.10 M
DRAFT Design (MLD)	11.00 M
Scantling (MLD)	13.13 M
CLASS DNV	
1A1 Tanker for Oil and Chemicals ESP.	
Ship type 3 (s2, b3, c3, v2, f2, str 0.1)	
EO, T-MON, VCS-2(Without vapour processing unit)	

FLAG	HONG KONG
COMPLEMENT	27P + 6 Suez crew

THIS DRAWING OR DOCUMENT IS THE PROPERTY OF STX SHIPBUILDING CO., LTD. AND MUST NOT BE PARTIALLY OR WHOLLY COPIED OR USED FOR ANY OTHER PURPOSE WITHOUT PRIOR WRITTEN PERMISSION OF STX SHIPBUILDING CO., LTD.	
STX	MODEL NO. S-1203
TYPE	51,000 DWT CRUDE/PRODUCT OIL AND CHEMICAL TANKER
MANAGER	C.J.KIM
CHECKED	J.-D.PARK
DRAWN	M.W.LEE
TEL. NO.	0551 239-3868
DATE	2007-01-25
SCALE	1/200
LEG.	48110P11CB
REF. NO.	0
STX Shipbuilding Co., Ltd.	