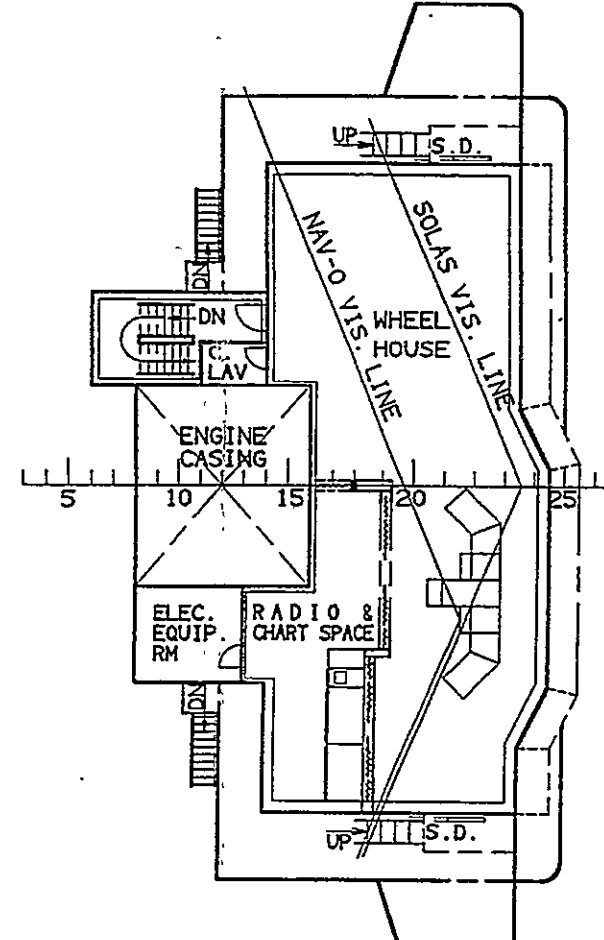


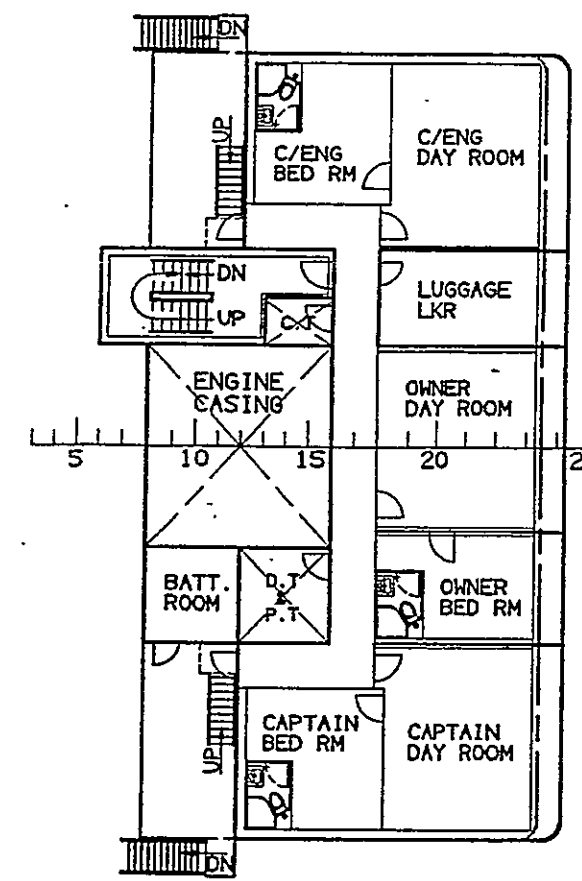
# GENERAL ARRANGEMENT

## M.V. "AGLAIA"

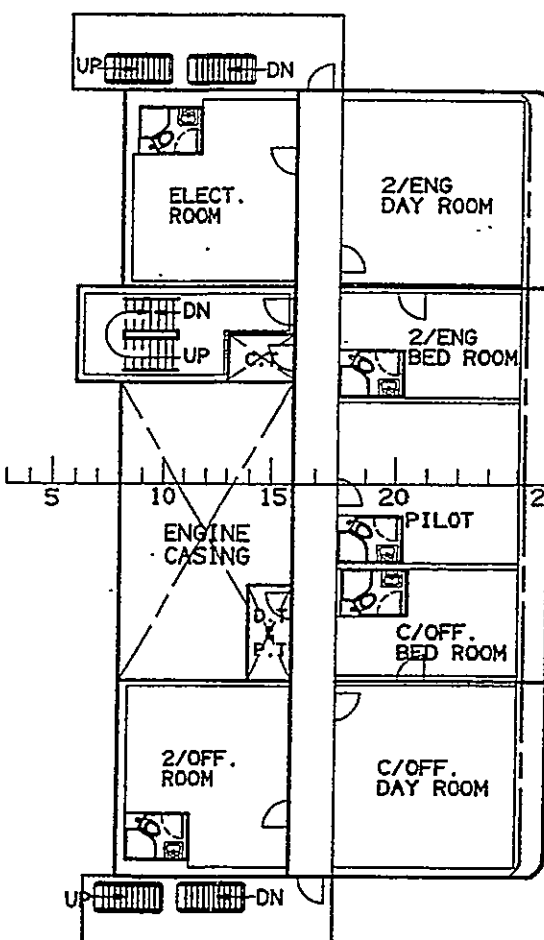
NAV BRI DECK



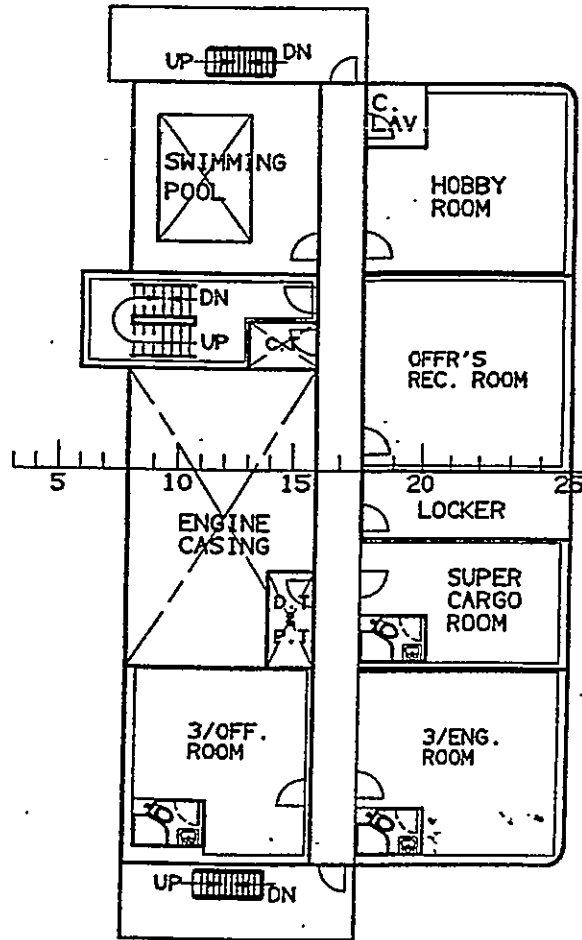
"E" DECK



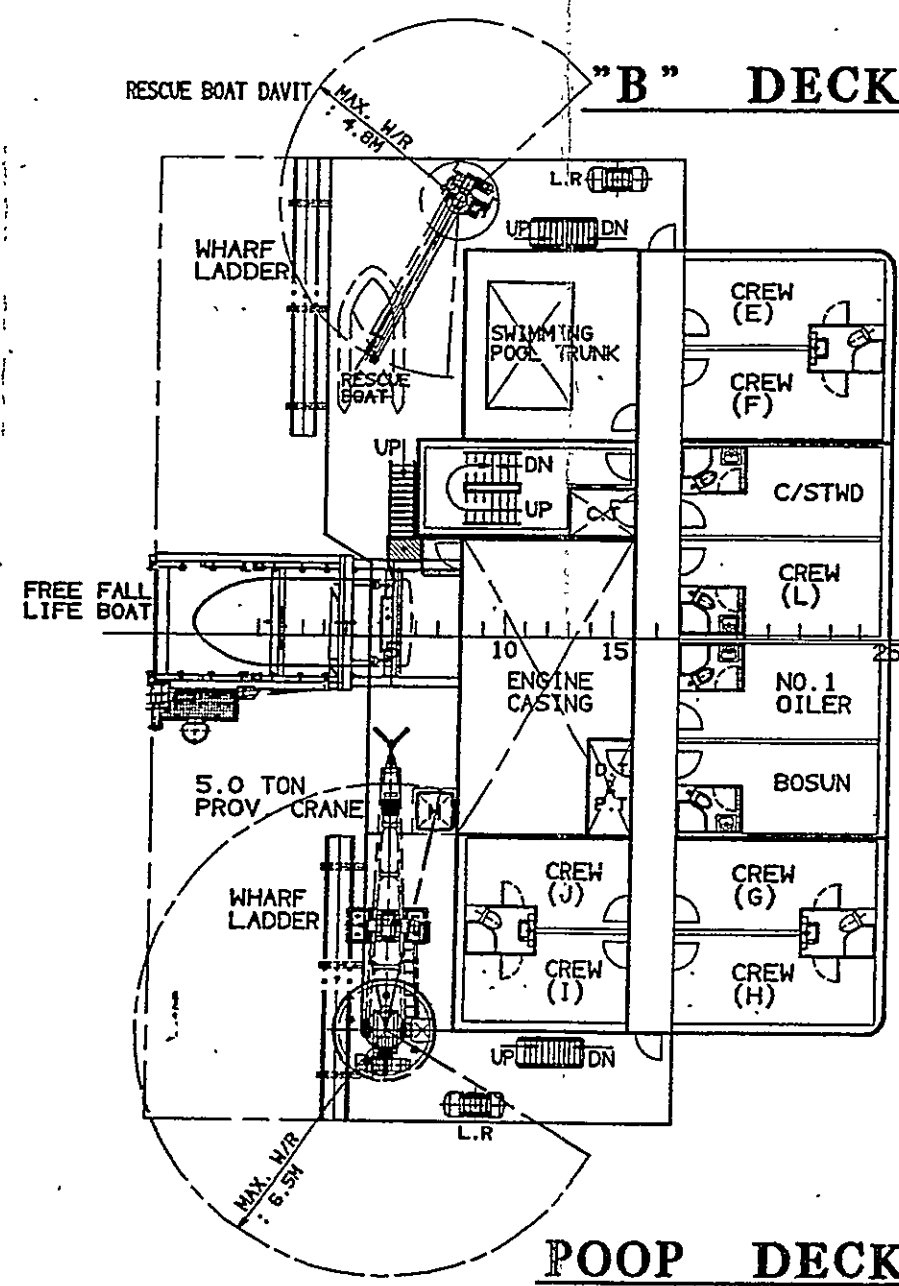
"D" DECK



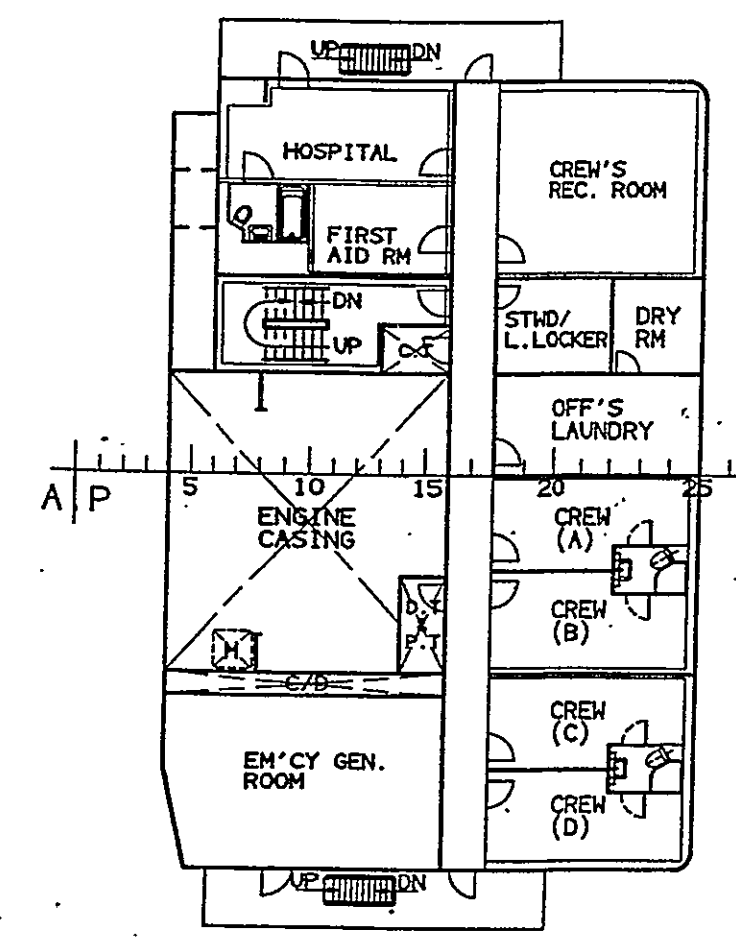
"C" DECK



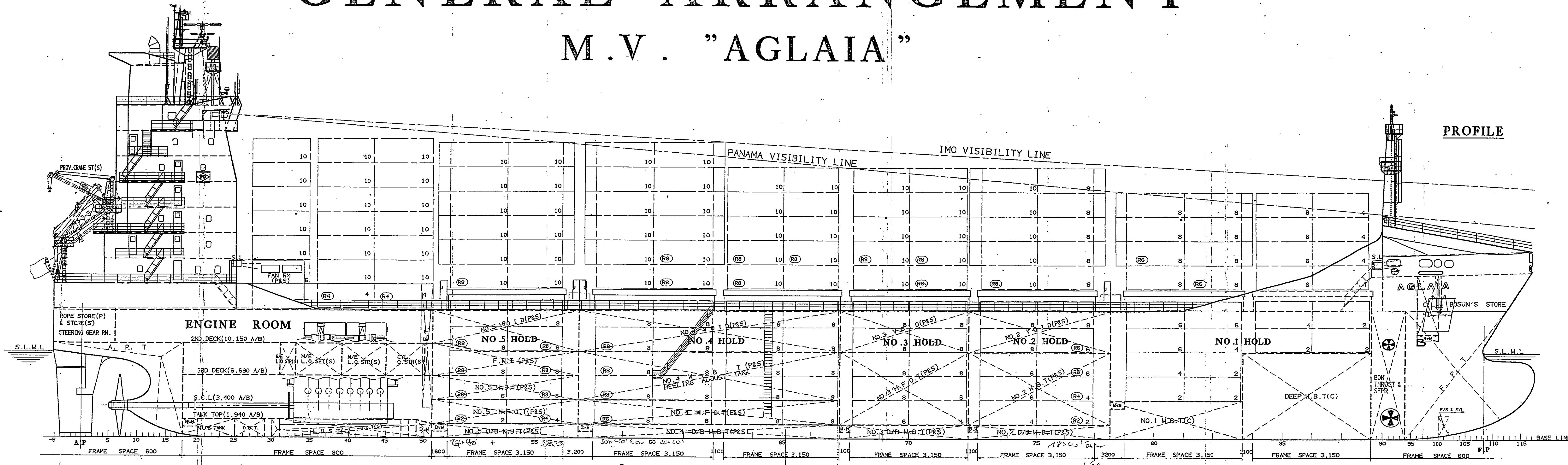
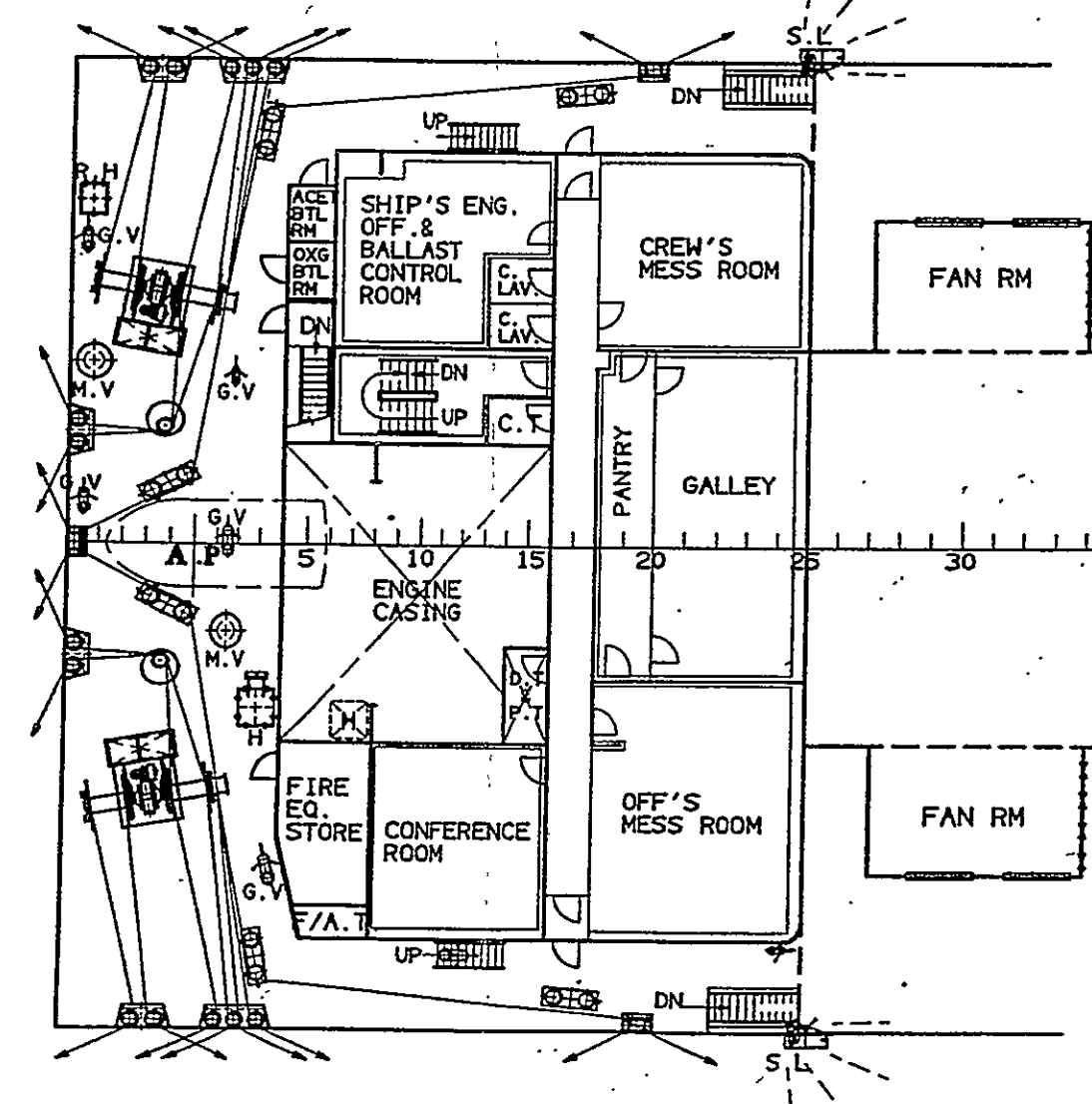
"B" DECK



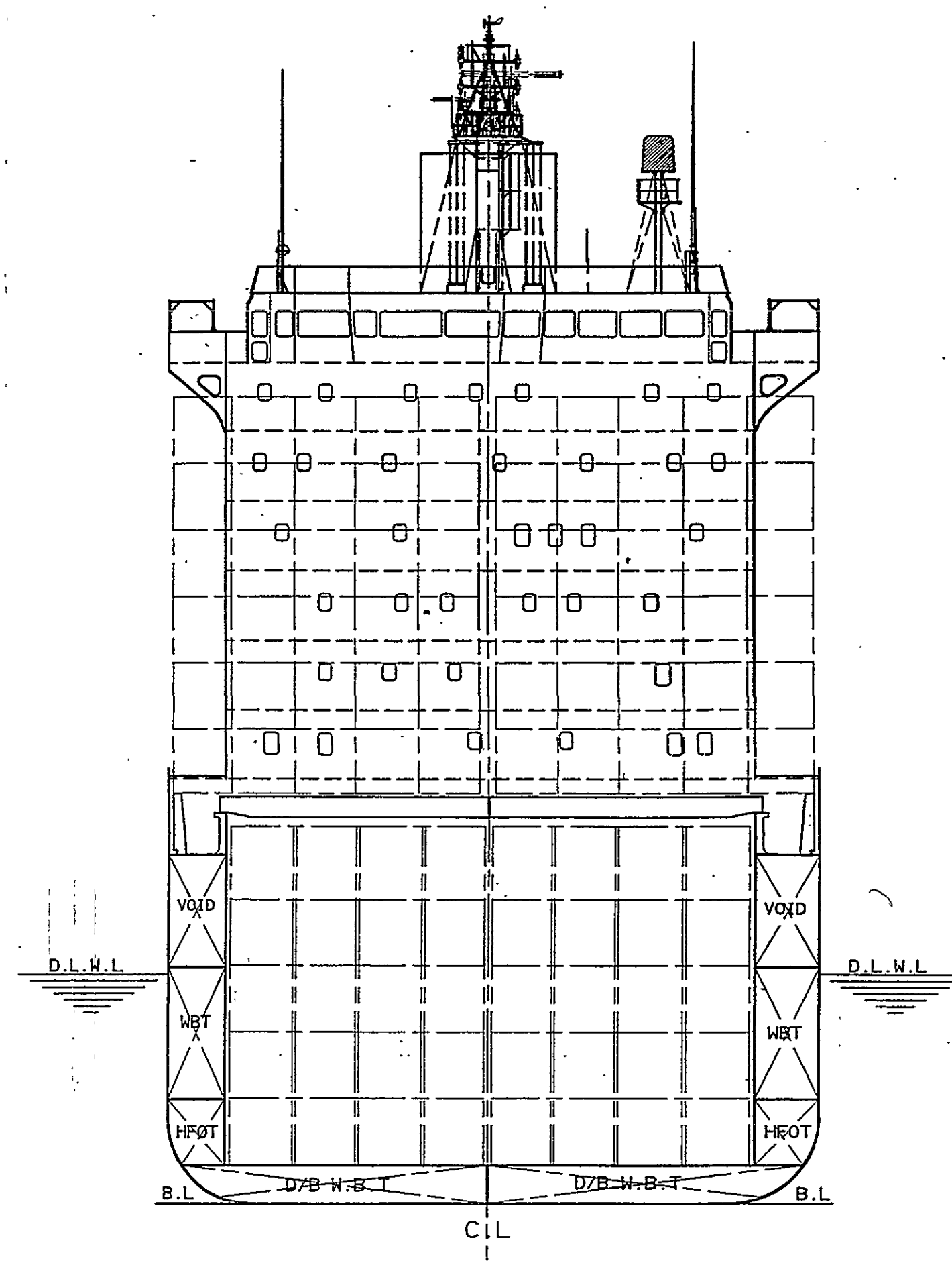
"A" DECK



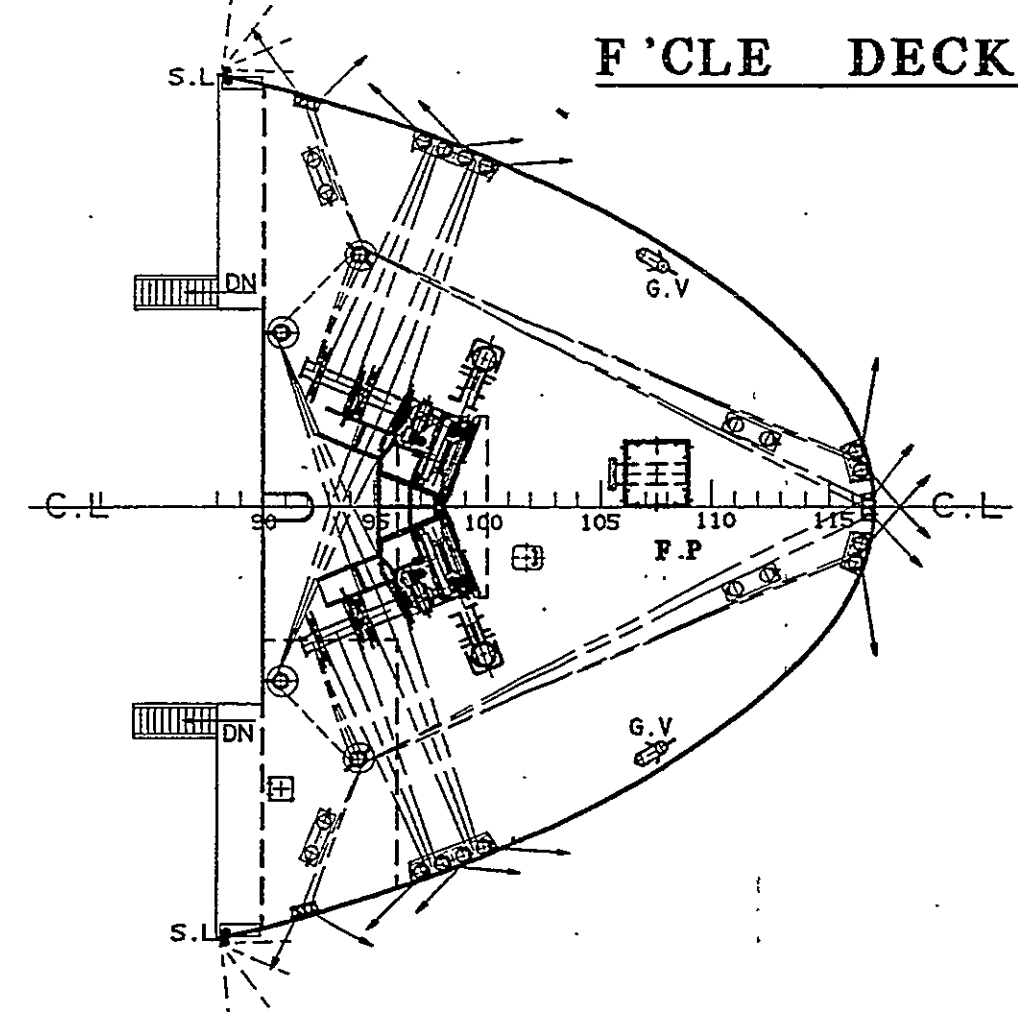
POOP DECK



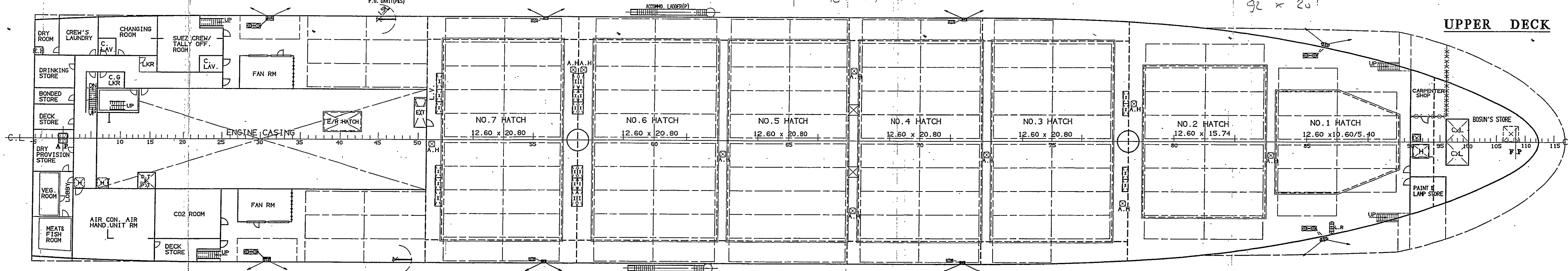
PROFILE



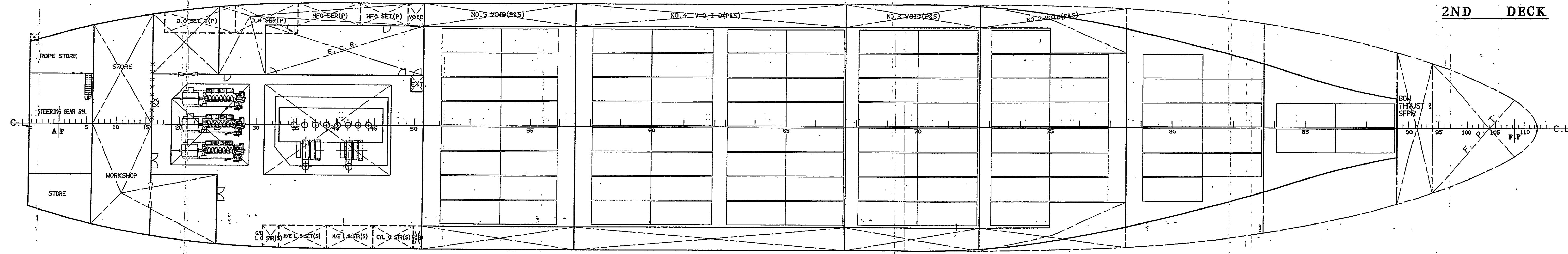
MIDSHIP SECTION



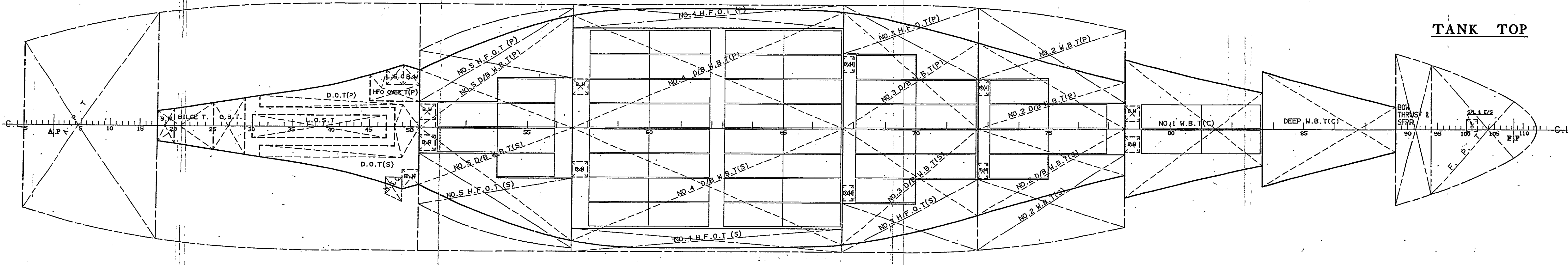
UPPER DECK



2ND DECK



TANK TOP



### PRINCIPAL PARTICULARS

LENGTH O. A.	158.70 m
LENGTH B. P.	150.00 m
BREADTH (MLD)	25.60 m
DEPTH (MLD)	13.70 m
DESIGN DRAFT (MLD)	9.000 m
SUMMER DRAFT (EXT.)	9.2145m
DEADWEIGHT AT DESIGN DRAFT	14,684.5 MT
DEADWEIGHT AT SUMMER DRAFT	15,315.4 MT
INTERNATIONAL GROSS TONNAGE	14,278 Ton
NET TONNAGE	4,914 Ton

MAIN ENGINE : WARTSILA NSD 8RTA62U  
24,160 PS x 113.0 RPM AT MCR  
20,536 PS x 107.0 RPM AT NCR

OFFICIAL NUMBER : 1566  
CALL SIGN : V7CM5

SERVICE SPEED : KTS

CLASSIFICATION : GL - B100A5, "Container Ship",  
"SOLAS-2, Reg. 54", +MC, AUT,  
1W, NAV-O.

COMPLEMENT : 25 P

APR. BY : H.K. Lee DATE : APR. 12, 2001 SCALE : 1/200 HULL NO. : N-648

APR. BY : S. Park TITLE : 1200 TEU CLASS CONTAINER CARRIER

CHK. BY : Y. Park GENERAL ARRANGEMENT

DWG. NO. : B005 - 200

REV. NO. : F

TEL. NO. : 410-3407

HANJIN HEAVY INDUSTRIES & CONSTRUCTION Co., Ltd.